

KITTITAS COUNTY COMMUNITY DEVELOPMENT SERVICES

411 N. Ruby St., Suite 2, Ellensburg, WA 98926

CDS@CO.KITTITAS.WA.US

Office (509) 962-7506

Fax (509) 962-7682

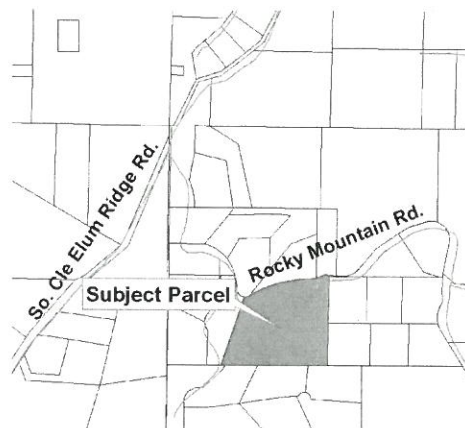
Notice of Public Hearing McBeth Preliminary Plat (P-07-54)

Notice is hereby given that the Kittitas County Planning Commission will be conducting an open record public hearing to consider the McBeth Preliminary Plat (P-07-54), as submitted by Brooks and Deborah McBeth, landowners. The applicants are proposing a 4-lot preliminary plat pursuant to Kittitas County Code 16.32 to subdivide approximately 12.00 acres of land zoned Rural-3. The subject property is located southeast of South Cle Elum Ridge Road, south of Rocky Mountain Road, Cle Elum, WA 98922, and is located in a portion of Section 09, T19N, R15E, WM, in Kittitas County. Map number 19-15-09051-0004.

An open record hearing is scheduled before the Kittitas County Planning Commission on **June 10, 2008**, at 6:30 p.m. in the Commissioner's Auditorium, Kittitas County Courthouse. The Planning Commission at said public hearing will consider written and oral testimony. Interested persons are encouraged to verify with Kittitas County Community Development Services by calling (509) 962-7506 prior to attending.

Project documents may be viewed during normal business hours at Kittitas County Community Development Services (CDS) Office, 411 N. Ruby Street, Ellensburg, WA 98926. Related documents may also be viewed on the CDS website at <http://www.co.kittitas.wa.us/cds/current/>. Please contact CDS at (509) 962-7506 with any questions you might have. Staff Planner: Mackenzie Moynihan.

Date: May 16, 2008
Publish: May 16, 2008; Daily Record
Publish: May 22, 2008; NKC Tribune



DARRYL PIERCY, DIRECTOR

ALLISON KIMBALL, ASSISTANT DIRECTOR

COMMUNITY PLANNING • BUILDING INSPECTION • PLAN REVIEW • ADMINISTRATION • PERMIT SERVICES • CODE ENFORCEMENT • FIRE INVESTIGATION